



Z-VIEW

WIRELESS VIDEO INTERCOM



The OZ-VIEW wireless colour video intercom system comprises of a stylish weatherproof external call station together with a modern portable hands-free monitor

Also available with proximity access control

QUALITY AND RELIABILITY FROM THE
INNOVATORS IN WIRELESS SECURITY
AND SAFETY EQUIPMENT



Z-VIEW

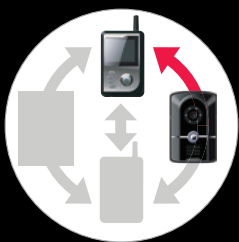
WIRELESS VIDEO INTERCOM



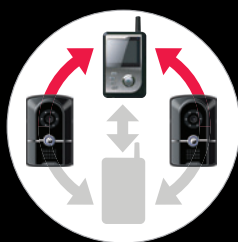
FEATURES

- Wireless video intercom
- Mobile handset with 2.4 TFT-LCD screen
- Unlock doors and gates remotely for visitors
- Range in free field 300 meters
- 12 selectable ringtones
- Handset to handset communication (paging)
- Built-in surveillance mode function
- Mute and vibration feature
- Intra red camera in outside call station - see callers at night
- Expand to a 2 way system by adding a call station and handset
- Backup battery for handset and entry panel
- Standby status 72 hours
- Optional proximity access control
- Easy to install

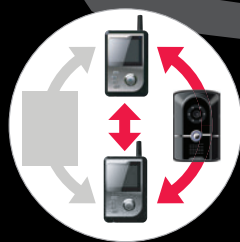
CONFIGURATIONS



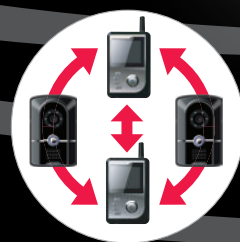
Standard use
with single
entrance



Single
handset to
view multiple
entrances



Multiple
handsets to
view single
entrance



Multiple handsets
to view multiple
entrances

TECHNICAL SPECIFICATIONS

HAND HELD MONITOR

Screen:	2.4" TFT LCD
Effective Pixels:	320×240
Power Source:	Built-in rechargeable battery Plug-in DC4.5V/1A charger via wall or desk top bracket
Charging Time:	Initially 7~10 hours. Later around 4 hours
Mini USB port:	For battery charge
Current:	20mA~30mA/3.7V (standby) 170mA (Operation)
Sensitivity:	-90dBm
Dimensions (H,W,D):	102.5mm×66.5mm×18mm
Weight:	150g

ENTRY PANEL

Camera:	1/4" CMOS
Min. Illumination:	0 Lux (with IR LED's on)
Power:	DC5V/1A, plug-in power supply
Current:	20mA~30mA (standby) 190mA (operation)
Audio Input:	12-digits digital audio signal
Image Compression:	MJPEG compression
Transmission Power:	16~20dBm
Ringing tone:	12 selectable tones
Dimension (H,W,D):	127mm×95mm×37mm
Weight:	150g

AVAILABLE FROM

